



# **CABINET ASSEMBLY**

*Basic Installation and Assembly Instructions*

**WE BUILD IT BETTER**



## **TABLE OF CONTENTS**

<b><i>Cabinet Installation Guide</i></b>	<b><i>3-4</i></b>
<b><i>Corner Base Assembly</i></b>	<b><i>5-12</i></b>
<b><i>Corner Overhead Assembly</i></b>	<b><i>13-17</i></b>
<b><i>Joined Base Assembly</i></b>	<b><i>18-24</i></b>

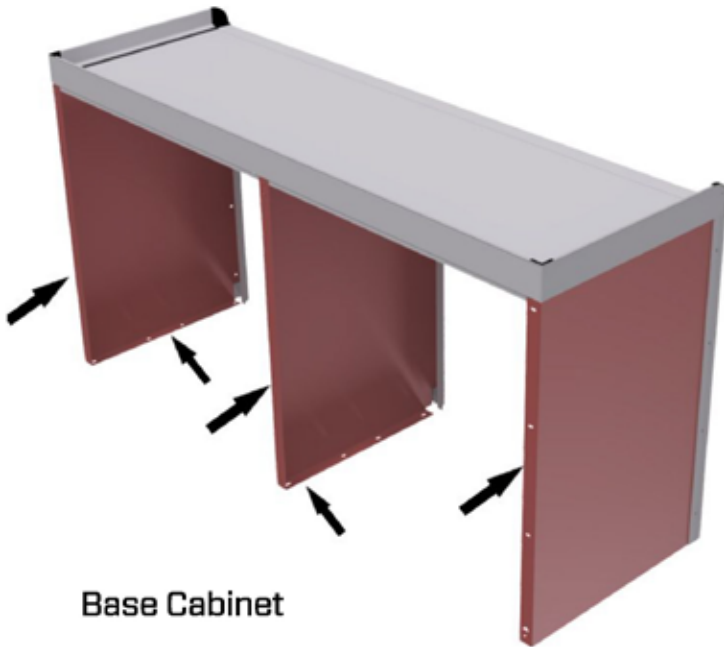
## Cabinet Installation Guide

Thank you for the purchase of your new CTECH cabinet, we deliver the finest and most innovative products in the market today. Included are step-by-step instructions for installing your CTECH cabinet. Be sure to read over and understand the instructions prior to installation.



***WE BUILD IT BETTER***





Base Cabinet

Where is your cabinet mounting to?

- Wall
- Ceiling
- Floor

What is your cabinet mounting to?

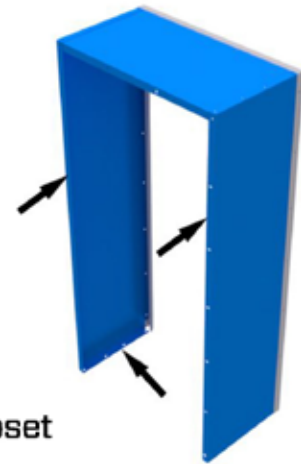
- Wood
- Steel
- Concrete
- Plastic

Mounting fasteners are not included because each application of the cabinet may vary.

When mounting the cabinet a sturdy (stud) support must be located to secure the cabinet to.

#### Cabinet mounting instructions:

1. Measure desired location to make sure the cabinet fits
2. Measure where the stud distances (or alternative mounting locations) and mark on cabinet
3. Drill holes on the rear mounting flanges of cabinet in appropriate areas for mounting. Maintain  $\frac{3}{4}$ " distance from top and bottom. 40" or taller cabinets are recommended to have a center mounting location in addition to the top and bottom. (hole size depends on the type of fasteners used)
4. Top panel and floor panels can be mounted through flanges (same as back) using standard stud spacing (16" on center) once stud locations have been acquired



Closet



Overhead Cabinet

CTECH Manufacturing recommends using a minimum of 1/4" fastener

Note: Some cabinets may require more than one person to install due to the size of the cabinet



## Corner Base Cabinet Installation Guide

Thank you for the purchase of your new CTECH cabinet, we deliver the finest and most innovative products in the market today. Included are the step-by-step instructions for joining your base cabinets with the GasketLoc Countertop system. Be sure to read over and understand the instructions prior to assembly.

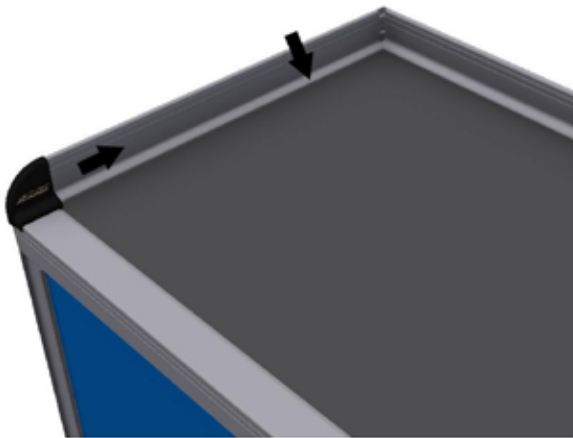
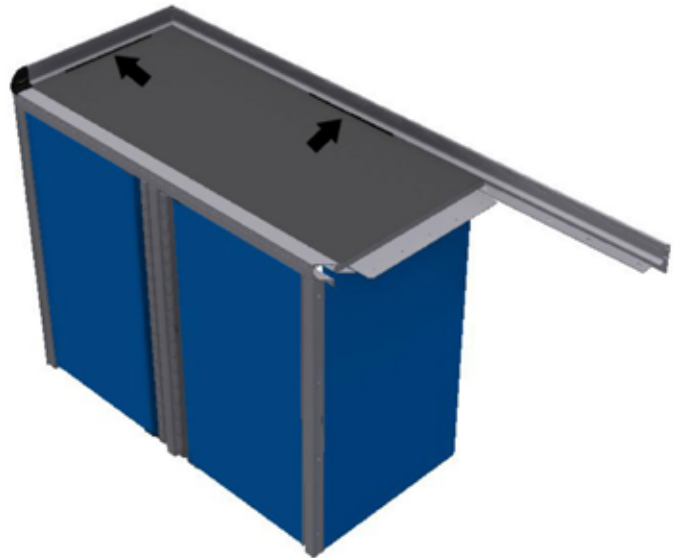


***WE BUILD IT BETTER***



**Step 1:**

- Remove the Shipping Gasket Strips by peeling them out from under the interior countertop bead using a flathead screwdriver


**Step 2:**

- Slide the back bead down out of the locking channels
- Then slide the side bead backwards out of the radius end cap
- Next slide the bead down out of the locking channels
- \*Repeat process for all Back and Side Beads

**Step 3:**

- Remove the countertops by lifting the back of the countertop up and pulling the countertop out from under the main rail's edge

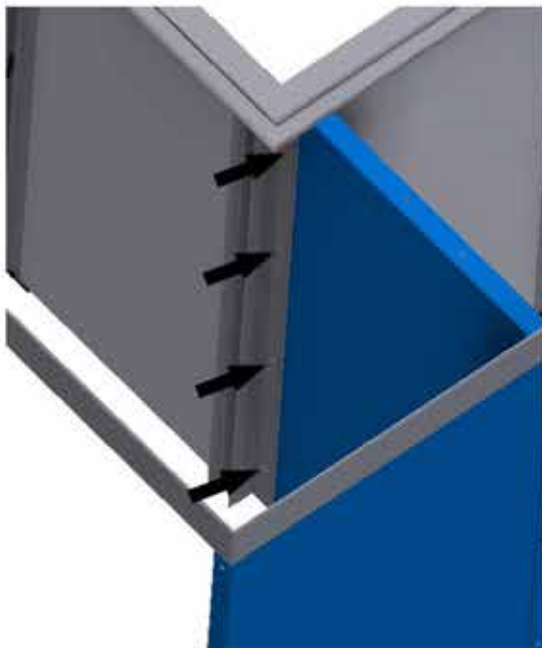


**Step 4:**

- Join Cabinets by aligning the main countertop rails

**Step 5:**

- Then insert the 10-16 x 1 Flat Head Torx Tapping Screw into the rails connecting them

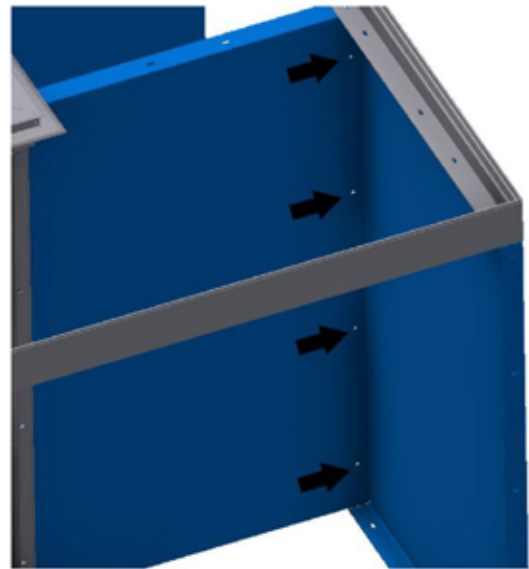
**Step 6:**

- Next on the inside of the cabinet, connect the two vertical rails with 10-24 x 3/4" carriage bolts and spin lock nuts



**Step 7:**

- Then connect the two filler panels using the same hardware

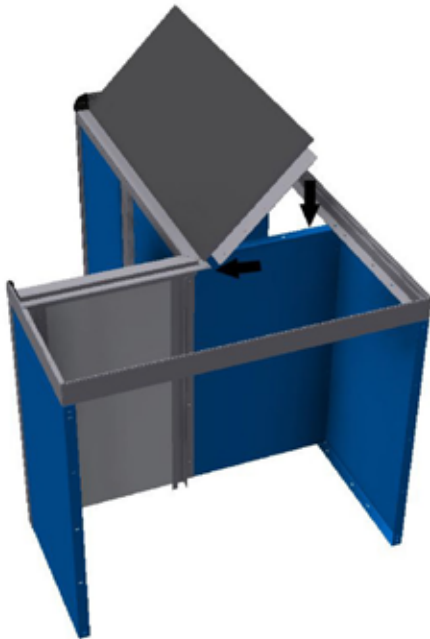


**For Laminate Countertop See Step 8 and Skip Page 4**

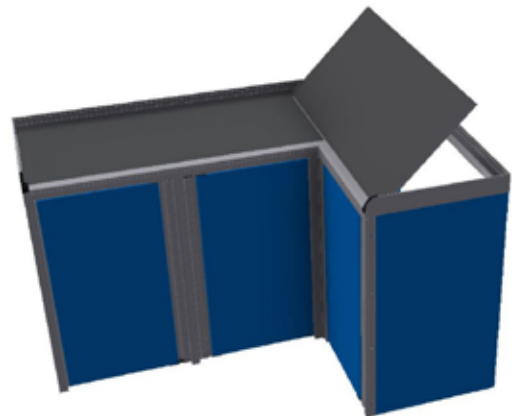
**For Stainless Steel Countertop See Page 5**

**Step 8:**

- Reinstall the countertop with the aluminum plate attached to the bottom of it in the corresponding cabinet
- Lay the front edge of the countertop onto the edge of the main rail at a 45 degree angle
- Then lower the back of the countertop onto the cabinet while sliding it under the 1/4" lip


**Step 9:**

- Then reinstall the other countertop onto the cabinet using the same technique as the first countertop





## Stainless Steel Countertop Instructions

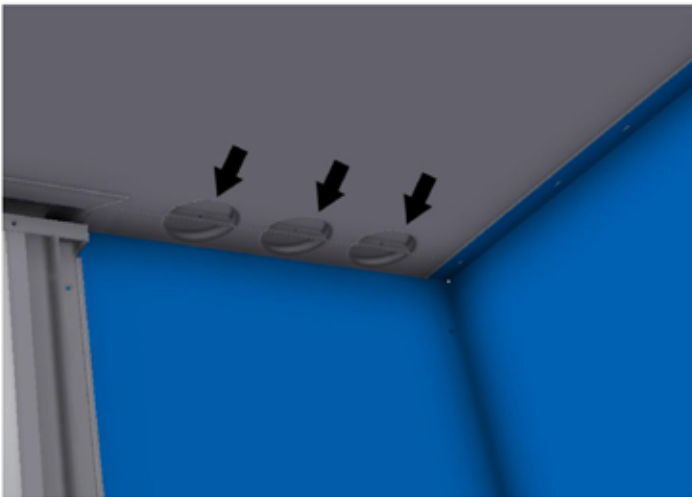
### Step 1:

- Reinstall both countertops, the order does not matter
- To do this place the front edge of the countertop onto the edge of the main rail at a 45 degree angle
- Then lower the back of the countertop onto the cabinet while sliding it under the 1/4" lip

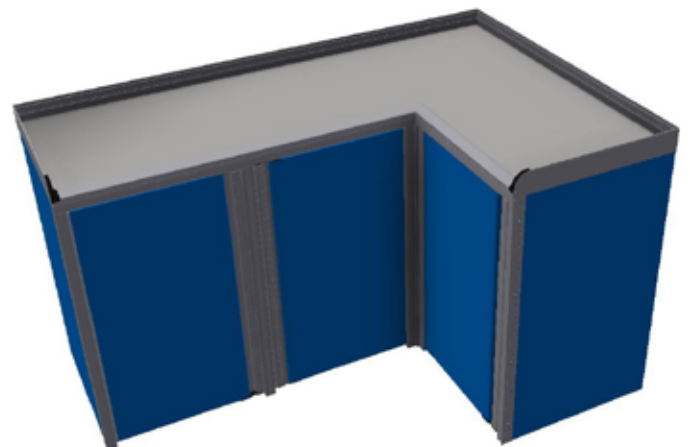


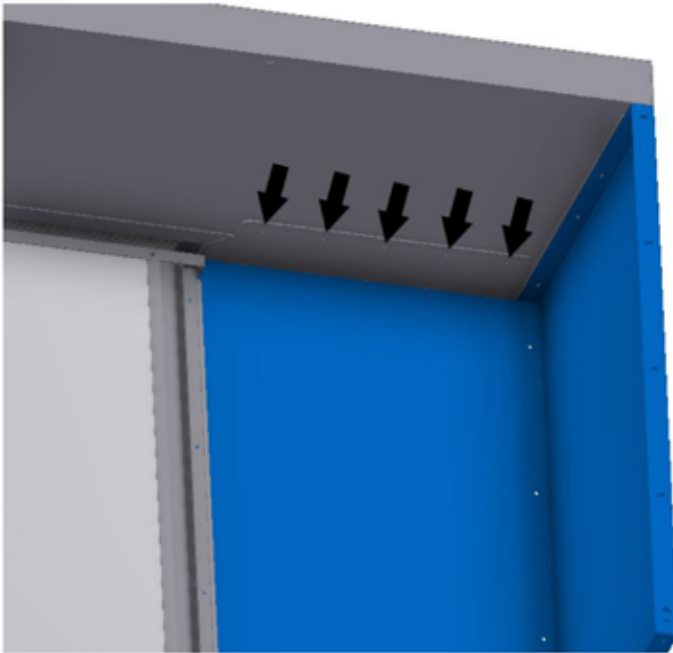
### Step 2:

- After installing both countertops, connect the two using 10-24 x 3/4" carriage bolts and spin lock nuts



Continue on to Step 11  
after installing the  
countertops

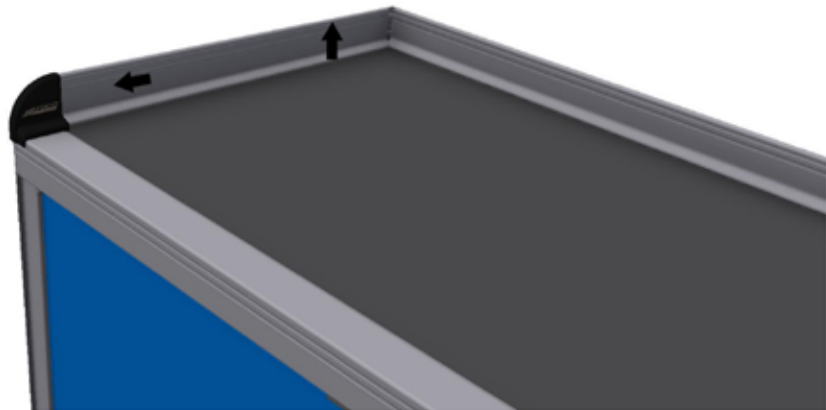



**Step 10:**

- Ensure that the countertops are pushed together and there is no gap between them
- Then while one person pushes down on the countertops, another person secures the unsecured countertop to the aluminum plate from inside the cabinet
- This can be done using wood screws that are 3/4" long

**Step 11:**

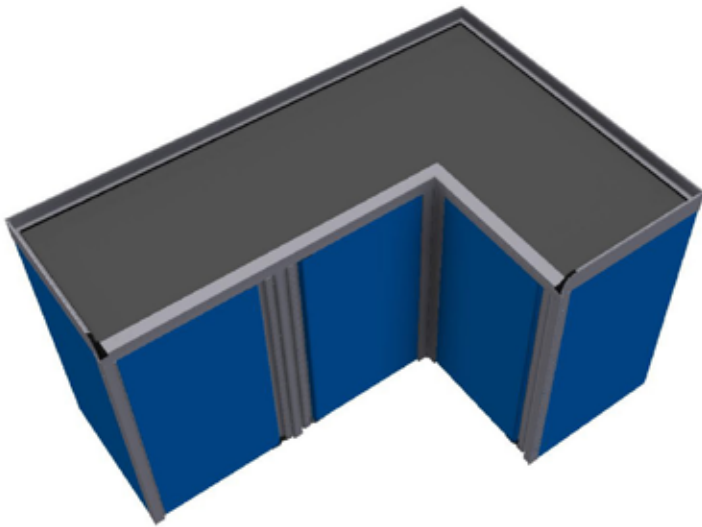
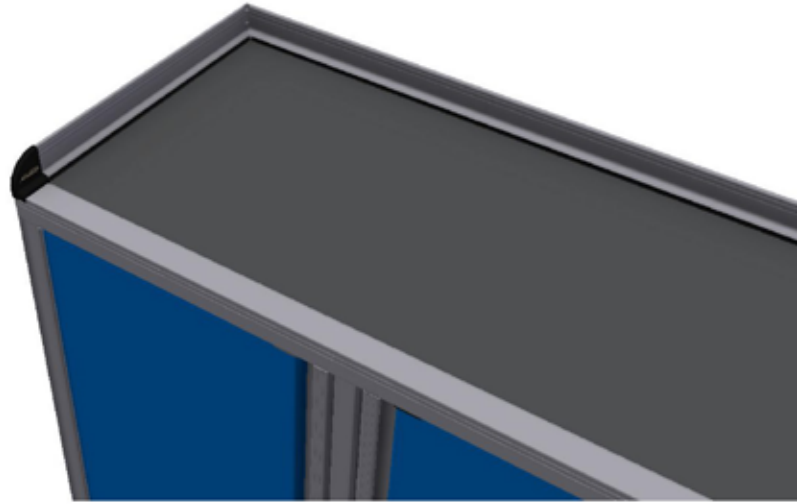
- To reinstall the two side beads, slide the beads up into the locking channel
- Then slide them towards the front of the cabinet into the radius end caps


**Step 12:**

- Reinstall both back beads by sliding them up into the locking channels

**Step 13:**

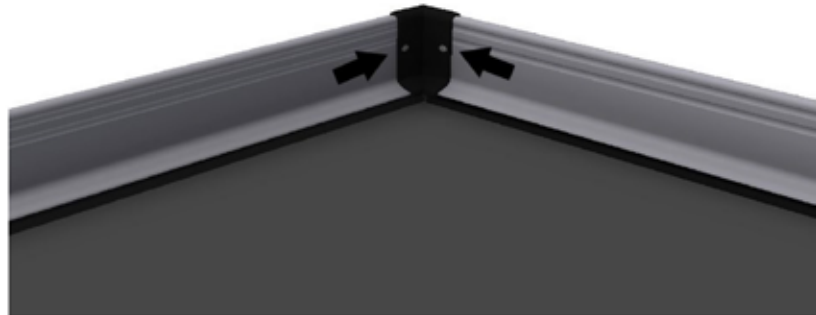
- Apply either isopropyl alcohol or WD40 to the gasket
- Start at the front radius end cap by inserting the gasket between the countertop and side bead so it locks in place
- Slide into recess of end cap

**Step 14:**

- Continue until the back corner, DO NOT cut the gasket in half, make a slit in the back edge of the gasket at the first corner to ensure a tight seal, and finish installing the gasket
- \*Repeat for all corners\*

**Step 14:**

- Place the corner end cap into position and mark each hole location
- Drill 5/32" holes at each mark, through interior beads only
- Insert plastic "push rivets" in the drilled holes securing the corner caps in position
- \*Repeat for all corner caps\*

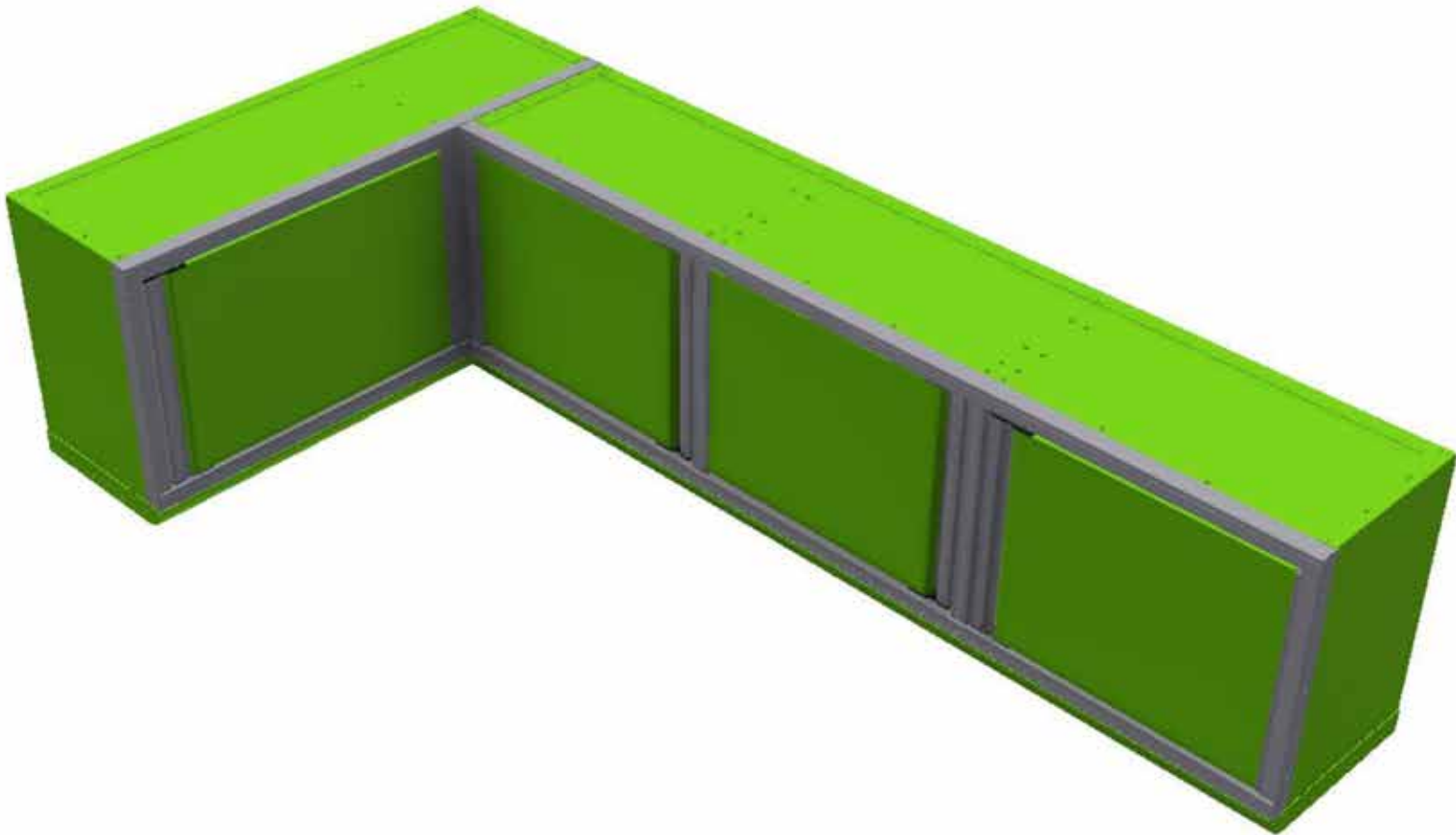






## Corner Cabinet Installation Guide

Thank you for the purchase of your new CTECH cabinet, we deliver the finest and most innovative products in the market today. Included are step-by-step instructions for joining your corner wall/overhead cabinets. Be sure to read over and understand the instructions prior to assembly.

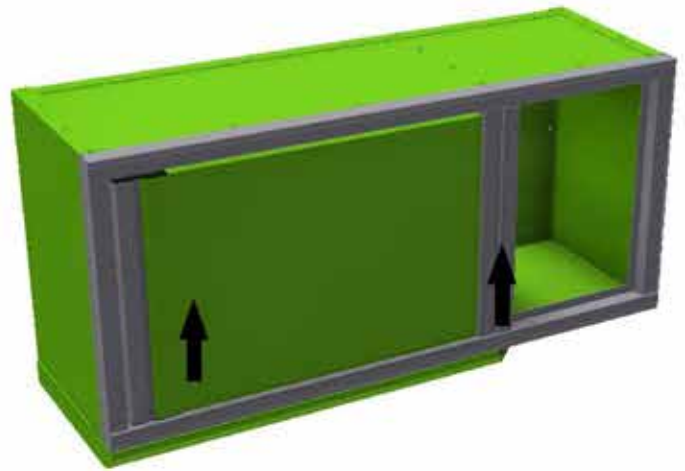


***WE BUILD IT BETTER***



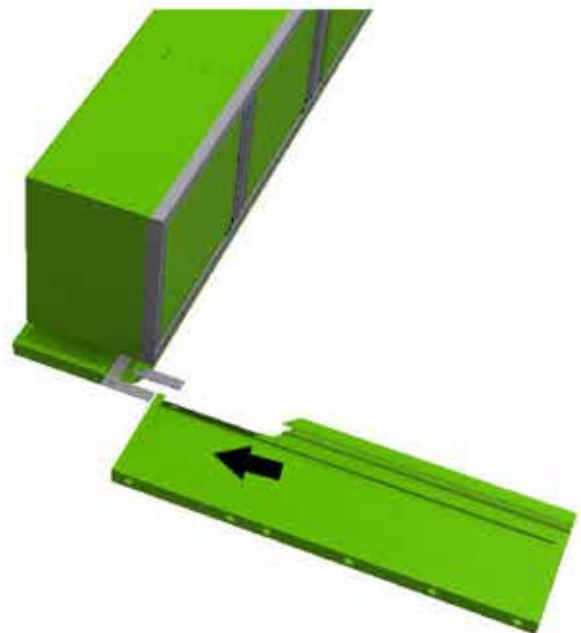
## Step 1:

- Remove the bottom radius panel from only the cabinet with the extended opening
- \*If cabinets do not have bottom radius go to page 4\*



## Step 2:

- To do this remove all hardware connecting the radius to the cabinet

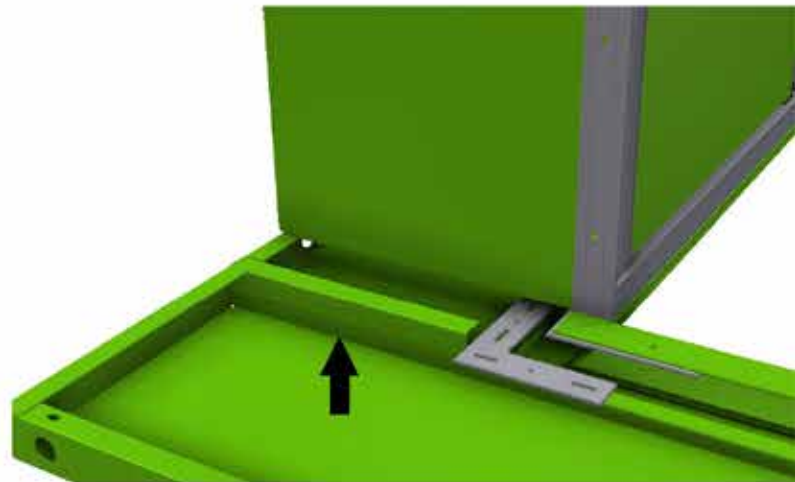


## Step 3:

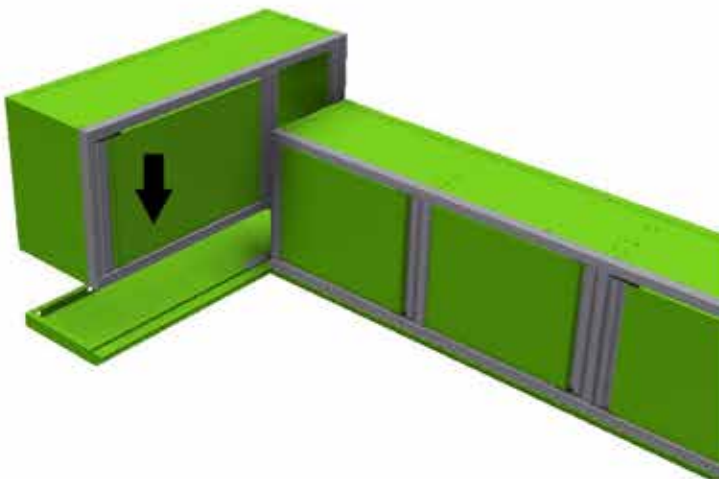
- Slide the radius panel into position, by matching up the miter joint

**Step 4:**

- Attach the radius panel to the L-Shaped Brackets, making sure that the miter joints on each radius line up
- The inside L-Bracket will be attached using 1/4" x 3/4" Flat Head Countersunk screws and spin locks
- The outside L-Bracket will be attached using 1/4" x 1/2" carriage bolts and spin locks

**Step 5:**

- Then using 10-24 x 3/4" carriage bolts and spin lock nuts connect the radius flanges

**Step 6:**

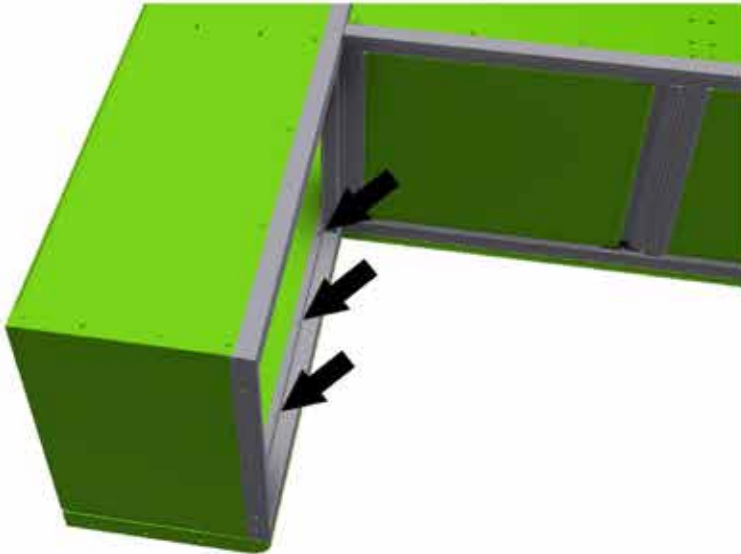
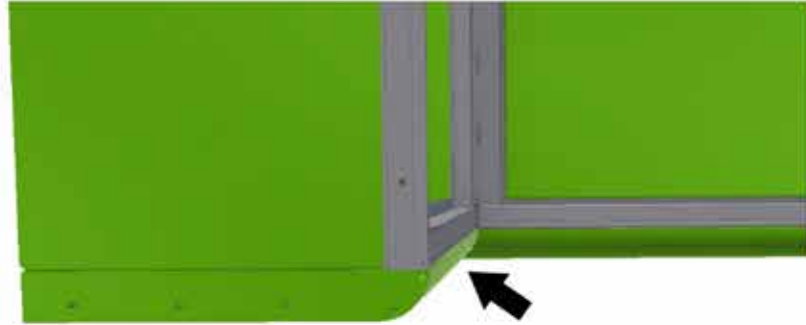
- Place the Cabinet back on the radius panel





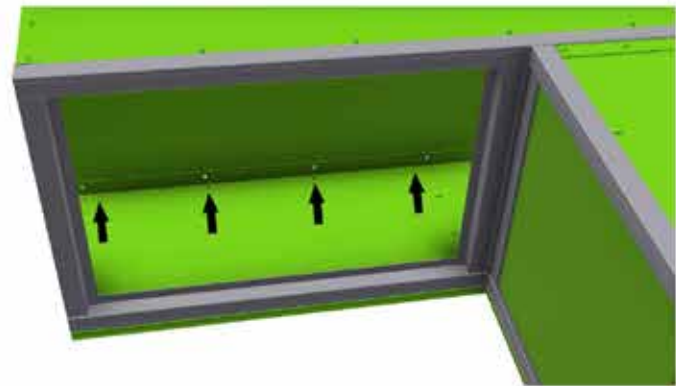
## Step 7:

- Align the front edge of the face frame with the radius panels radius



## Step 8:

- Then make sure the cabinets are tight together and secure the front of the cabinet to the front of the radius

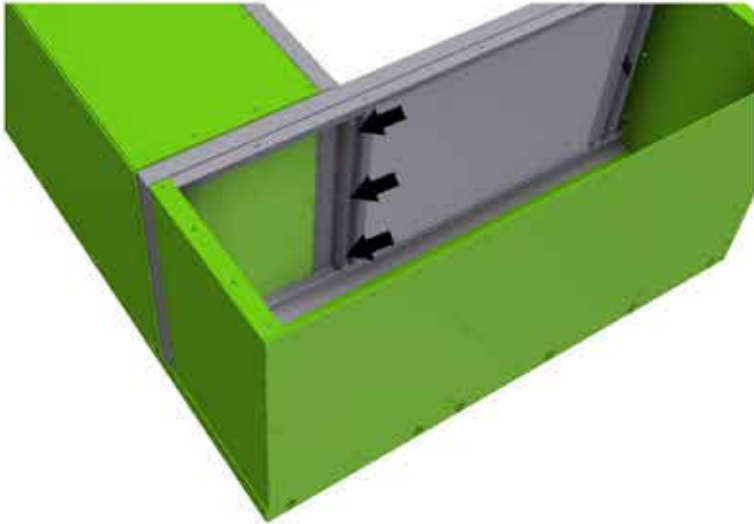


## Step 9:

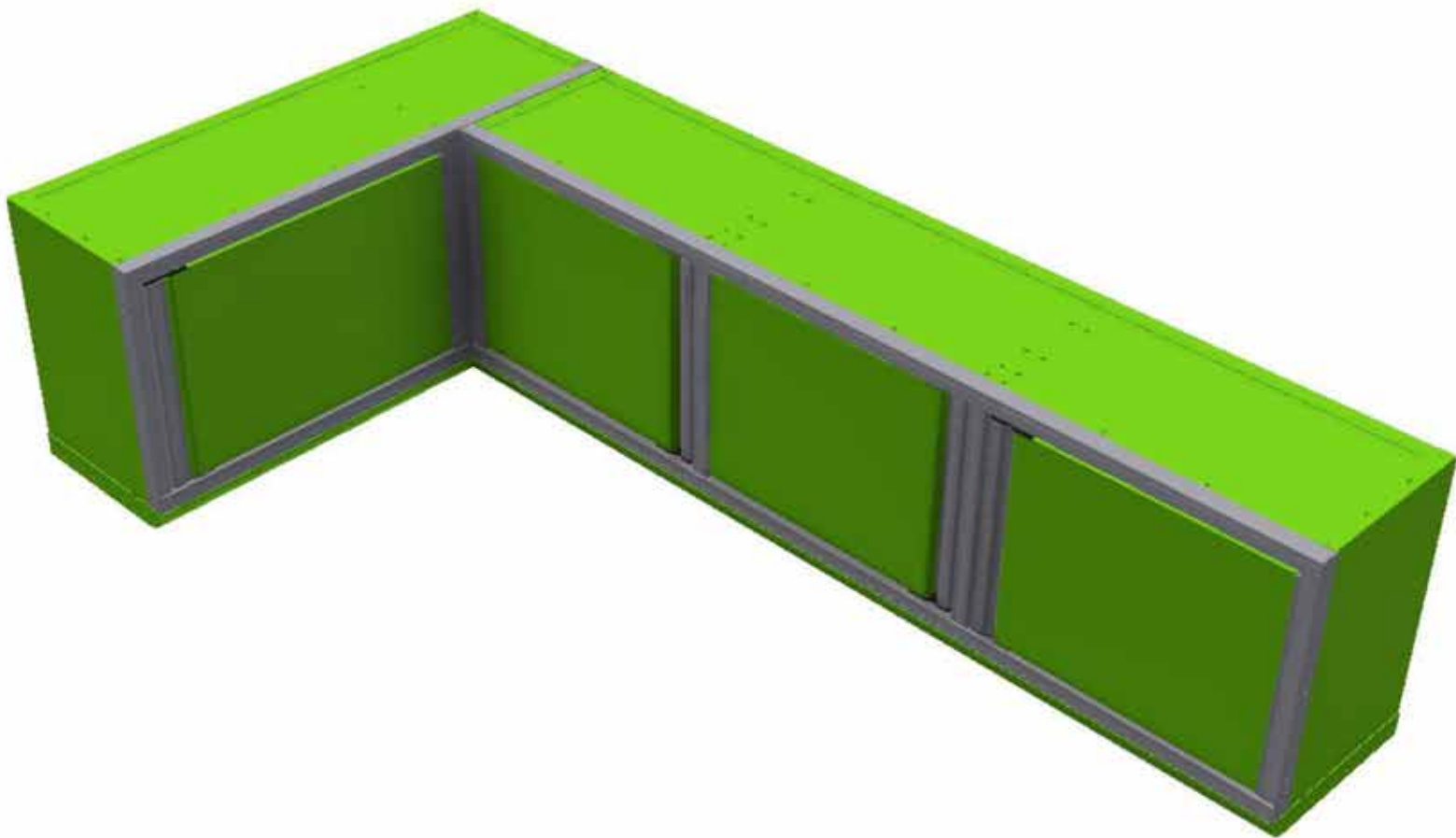
- After making sure the cabinet is properly aligned with the radius panel secure the back of the cabinet to the back of the radius





**Step 10:**

- If cabinets do not have bottom radius, slide the cabinets together and connect
- Lastly, connect the cabinets together using 10-24 x 3/4" carriage bolts and spin lock nuts



## *Joined Base Cabinet Assembly Instructions With GasketLoc Countertop*

Thank you for the purchase of your new CTECH cabinet, we deliver the finest and most innovative products in the market today. Included are the step-by-step instructions for joining your base cabinets with the GasketLoc Countertop system. Be sure to read over and understand the instructions prior to assembly.

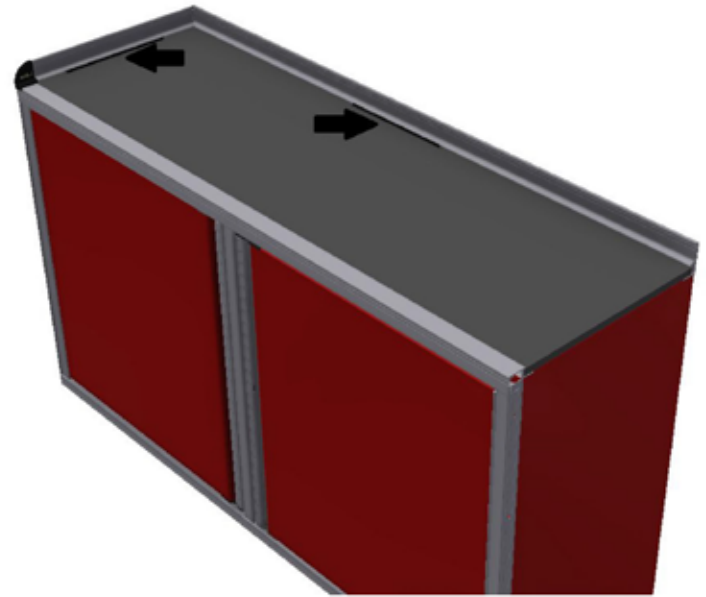
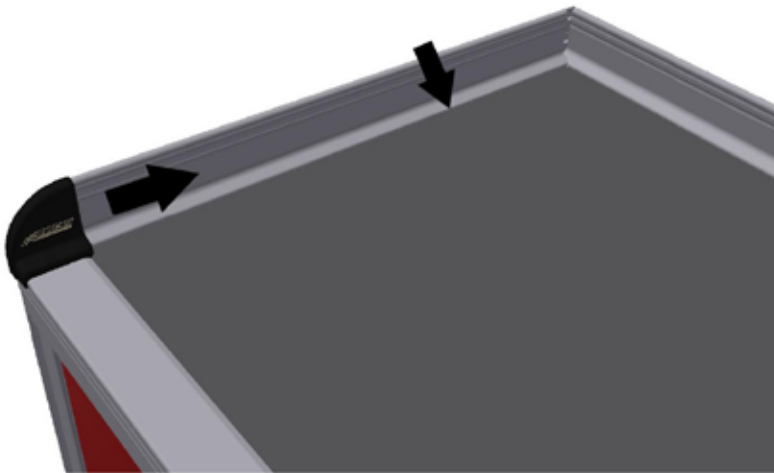


# ***WE BUILD IT BETTER***



**Step 1:**

- Remove the Shipping Gasket Strips by peeling them out from under the interior countertop bead using a flathead screwdriver

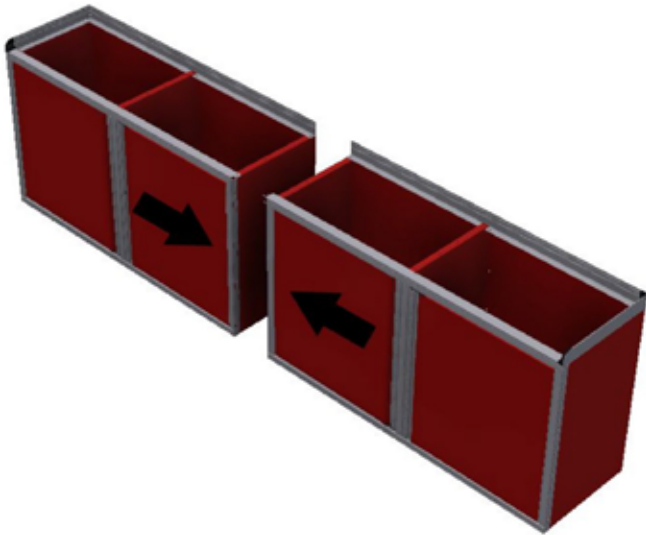
**Step 2:**

- First slide the back bead down out of the locking channels
- Then slide the Side Bead backwards out of the radius corner cap
- Then slide the bead down out of the locking channels
- \*Repeat process for all Back and Side Beads

**Step 3:**

- Remove the countertops by lifting the back of countertop up and pulling the countertop out from under the main rail's edge




**Step 4:**

- Join the cabinets by aligning male and female ends of the main front rails
- Then slide the cabinets together so that the face frame of the cabinets are tight together

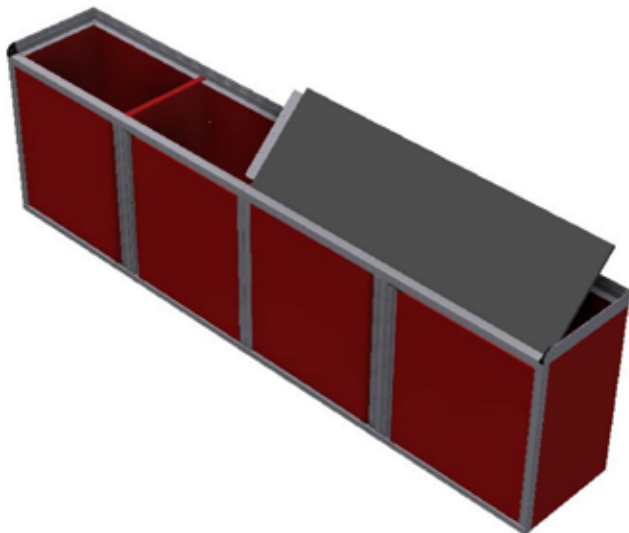
**Step 5:**

- Using a 10-24 x 3/4" carriage bolt and a spin lock nut, fasten the face frames together



**For Laminate Countertop See Step 6 and Skip Page 3**

**For Stainless Steel Countertop See Page 3**


**Step 6:**

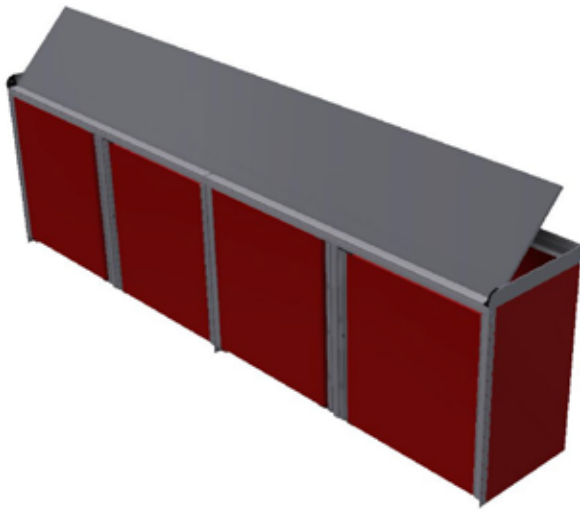
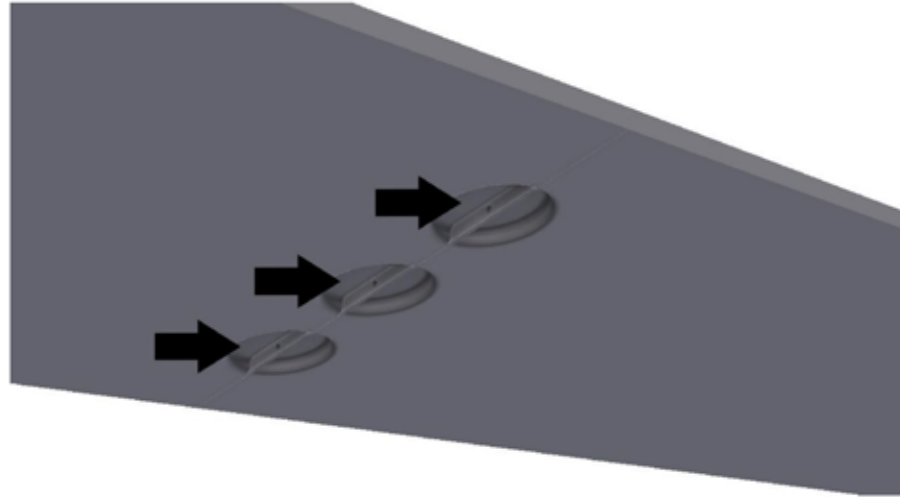
- Reinstall the countertop with the aluminum plate attached to the bottom of it in the corresponding cabinet
- Lay the front edge of the countertop onto the edge of the main front rail at a 45 degree angle
- Then lower the back of the countertop onto the cabinet while sliding it under the 1/4" lip



## Stainless Steel Countertop Instructions

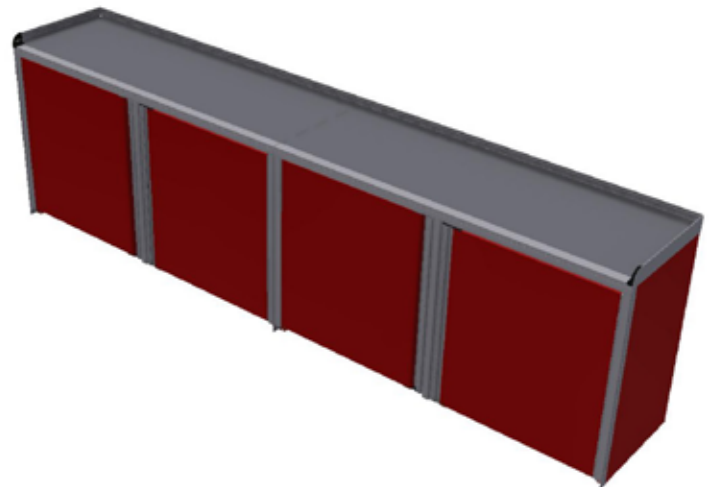
### Step 1:

- Using 10-24 x 3/4" carriage bolts and spin lock nuts secure the counter tops together



### Step 2:

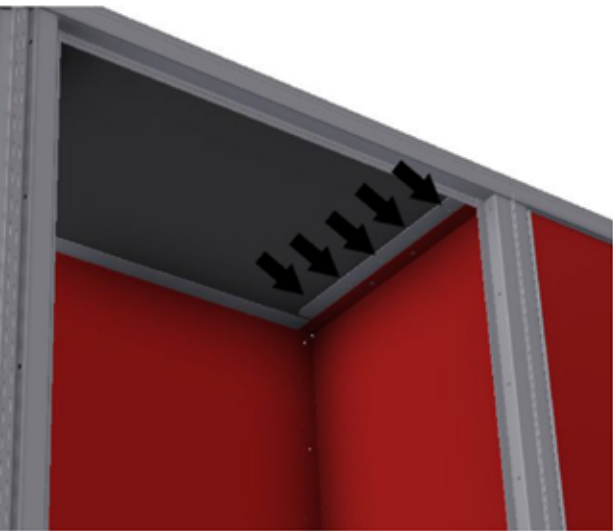
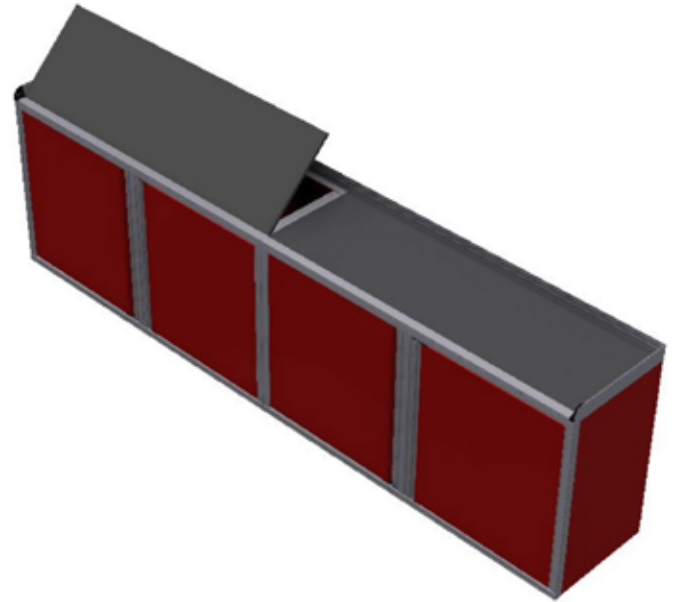
- Reinstall the countertops by laying the front edge of the countertop onto the edge of the main rail at a 45 degree angle
- Then lower the back of the countertop onto the cabinet while sliding it under the 1/4" lip



Proceed to Step 9 after  
countertops are  
installed

**Step 7:**

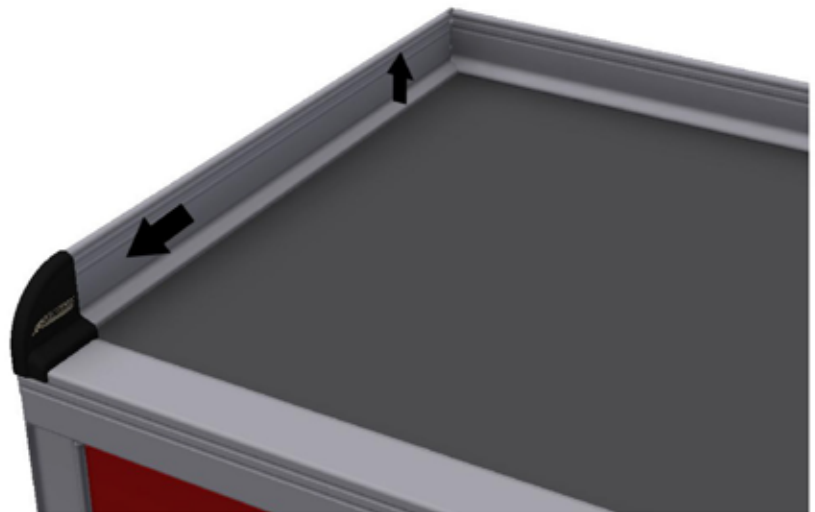
- Then reinstall the other countertop using the same technique as the first counter top


**Step 8:**

- Ensure that the countertops are pushed together and there is no gap between them
- Then while one person pushes down on the countertops another person secures the unsecured countertop to the aluminum plate from inside the cabinet
- This can be done using wood screws that are 3/4" long

**Step 9:**

- To reinstall the two side beads, slide the beads up into the locking channel
- Then slide them towards the front of the cabinet into the radius end caps

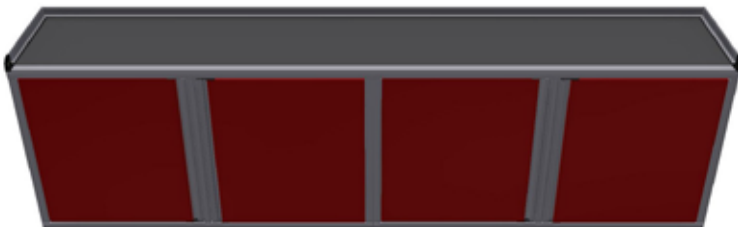
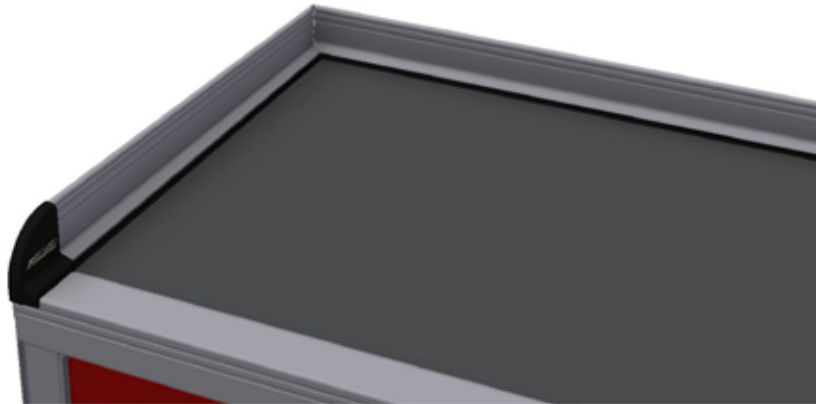


**Step 10:**

- Reinstall both Back Beads by sliding them up into the locking channels
- Adjust Beads side to side so that there is no gap in the middle

**Step 11:**

- Next apply either isopropyl alcohol or WD40 to the gasket
- Start at the front radius end cap by inserting the gasket between the countertop and side bead so it locks in place
- Slide into recess of end cap

**Step 12:**

- Continue until the back corner. DO NOT cut the gasket in half, make a slit in the back edge of the gasket at the first corner to ensure a tight seal, and finish installing the gasket
- \*Repeat for opposite corner\*



## Step 13:

- Place the corner cap into position and mark each hole location
- Drill  $5/32$ " holes at each mark, through interior beads only
- Insert plastic push rivet sleeve in the drilled holes then the push rivet lock pin securing the corner caps in position

